

Variable-Shot, Precision Flow Mold Filling Applications

BACKGROUND

The world's leading manufacturer of filters and clean air solutions has been a steady and loyal customer of Sealant Equipment & Engineering, Inc. purchasing 5 systems to date.

These two companies have worked together to ensure the right equipment was designed for metering, mixing and dispensing 2-component materials for the manufacture of many filters.

In the beginning, pneumatic-drive continuous flow equipment was specified. Due to increasing production speed and quality requirements, they now specify Sealant Equipment & Engineering's Servo-Flo 704 Gear Meter mix and dispense systems for precision flow and precise mold-filling volumes.

FILTER MOLDING

This filter manufacturer continually provides new and innovative products to their customer distribution network. The company selects rugged polyurethane formulations to create filters that meet the demands of the filter market customers.

Typical end-cap mold volume requirements from the same machine are 233.0 cc in 20 sec., 530.0 cc in 30 sec., 671.0 cc in 40 sec. and 700.30 cc in 20 sec. The flow rate set-points vary from 699.0 cc/min. up to 2100.6 cc/min.



2-component polyurethane is applied into the end cap mold prior to inserting the filter element



2-COMPONENT MATERIALS

The end cap molding material is 2-component unfilled polyurethane, 2:1 ratio by volume, with a work life of 135 seconds and supplied in tote tanks and 55 gallon drums.

The filter and material manufacturers prefer Sealant Equipment & Engineering's Servo-Flo 704 Gear Meter system for its economical, reliable and trouble-free metering of their 2-component polyurethane materials year after year.

SERVO-FLO 704 GEAR METER, MIX and DISPENSE SYSTEM

The dual independent-servo drive meter design provides many benefits for the user such as:

- ▶ Change ratio with changing any components or assemblies
- ▶ Fast and precise ratio adjustment for varying durometer
- ▶ Quick change of dispense program when changing filter sizes
- ▶ Ability to change flow rate on-ratio during the dispense cycle
- ▶ Program multiple flow rates during dispense for quality control
- ▶ Pre-program ratio and flow requirements for each filter size

The preferred Mix-Dispense Valve is model 2200-545-030-AA No-Drip Valve with optional Handle and Trigger assembly. This valve uses a 3/8" x 32 element disposable motionless mixer which does not require flushing. Double-acting or diaphragm supply pumps deliver A and B materials to the gear meter system.

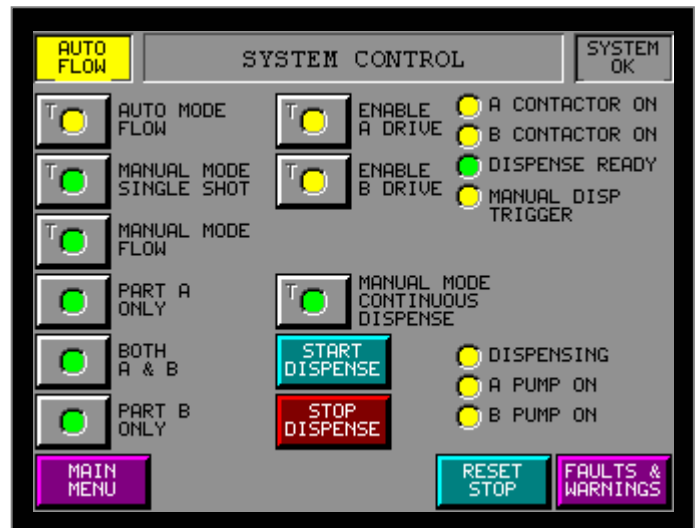
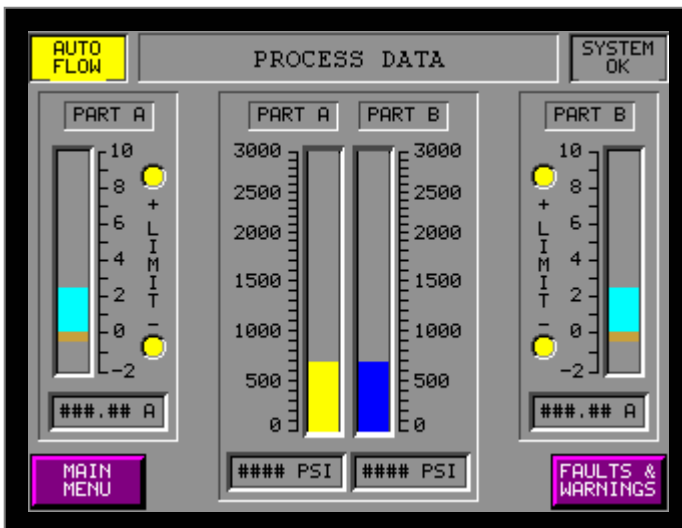
2-Part Filter End Cap Molding Applications



2200-545 No-Drip® Mix-Dispense Valve with No-Flush™ Disposable Mixer for fixed mounting (shown without mixer shroud)



2200-545 No-Drip® Mix-Dispense Valve with handle and trigger option for manual dispensing (can be converted to fixed mount)



Easy to understand touch-screens allow you to set and view the exact flow rate and volume of mixed material

Form: End Cap Molding-003



Manufacturers of Precision Dispense Systems & Valves

45677 Helm Street • P.O. Box 701460
 Plymouth, MI 48170 • USA
 Phone: (734) 459-8600 Fax: (734) 459-8686
 Website: www.SealantEquipment.com
 Email: Sales@SealantEquipment.com